

Hitachi Connected Service

**Cloud-based Air Compressor Monitoring Service**  
for OSP/DSP **NEXT II** series with Touch Screen\*



\*This service is not applicable when LAN port of Modbus TCP is used.

**Hitachi Connected Service supports stable operation of your compressors**



**24-hour real-time monitoring**

- (1) At-a-glance operation status monitoring
- (2) Remote operation status monitoring
- (3) Automatic Email notification of alarm



**Maintenance proposal**

- (4) Maintenance history data storing
- (5) Operation status trend graph
- (6) Operation history report output

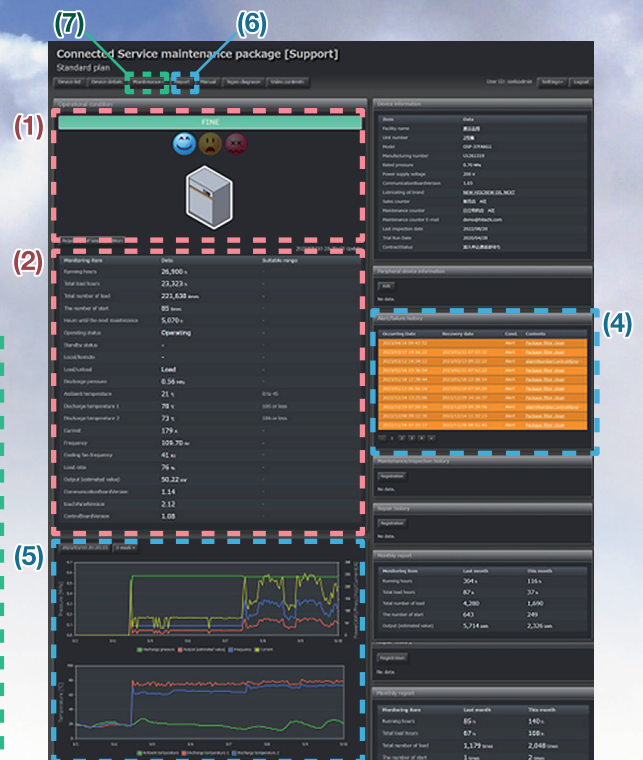


**Supportive functions**

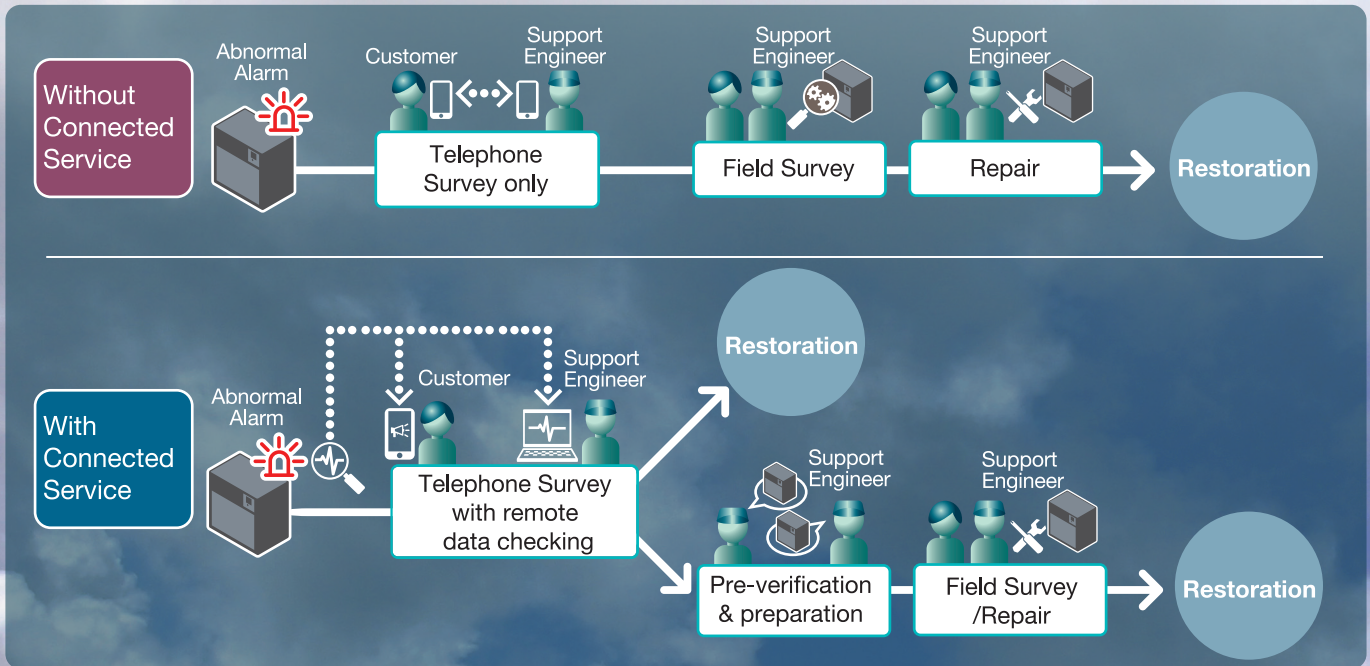
- (7) Quick parts quotation request
- (8) Troubleshooting guidance



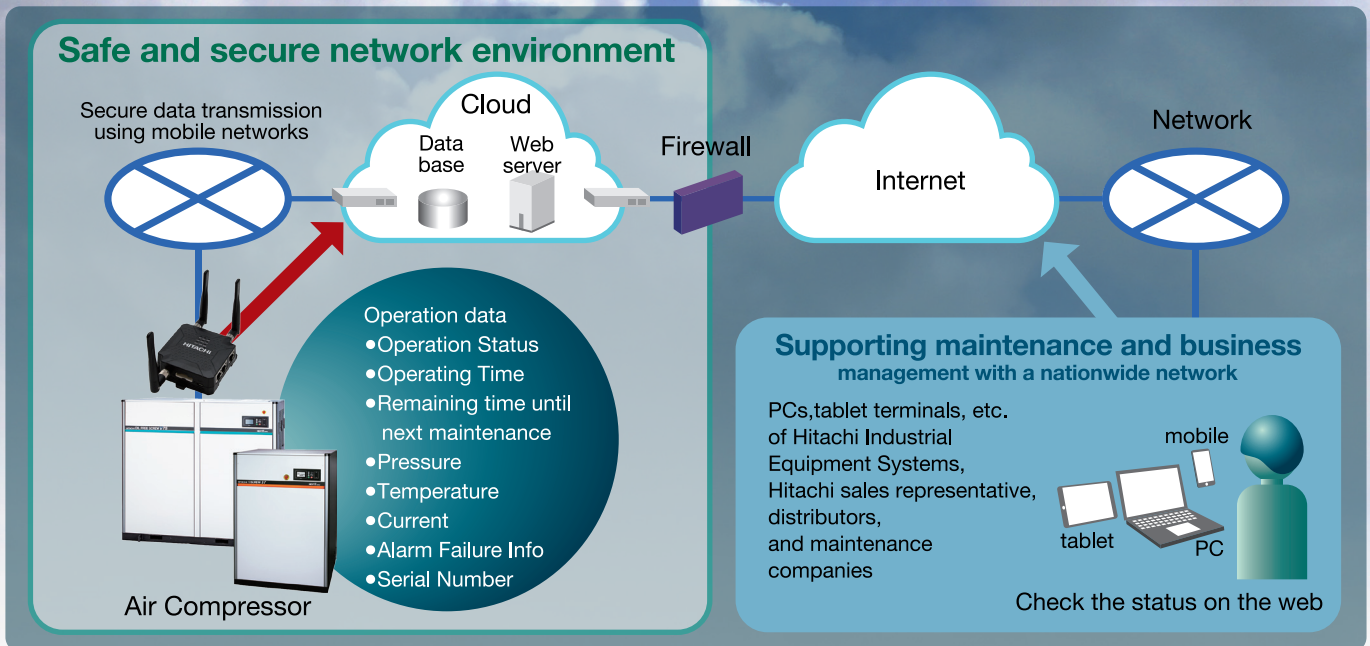
**Safe and secure network environment**  
(next page)



## Quicker restoration with remote operation data checking



## Cloud with strong security



The official site is here. >>



<https://www.hitachi-ies.co.jp/english/products/connected/cmp/index.html>

 **Hitachi Industrial Equipment Systems Co., Ltd.**

For details, please visit our website.

<https://www.hitachi-ies.co.jp/english/>



or further information, please contact your nearest sales representative.

Specifications including appearance subject to change without notice. Models vary by region. Contact your Hitachi sales representative for more details.